

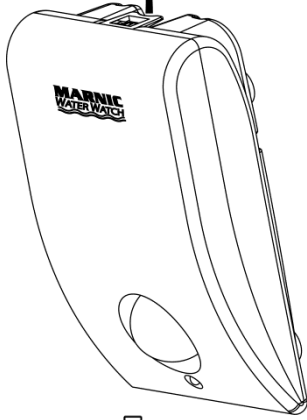
WATER WATCH INSTALLATION INSTRUCTIONS (240V AC)

Please read these instructions carefully

Description of Operation

The valve controls the water supply to the cistern and is electrically operated by the Water Watch controller. The controller detects individuals using the urinals. A flush cycle starts with a detection followed by a delay (20min default) set by the installer and then followed by a flush. At the end of a cycle the controller waits for a further detection before the next flush cycle commences. If a period of 24 hours (or 12 hrs) elapses without detection a flush will occur.

LIFT



OPENING AND CLOSING

LIFT THE TAB AS SHOWN TO RELEASE THE LID FROM THE BASE. ALONG THE BOTTOM EDGE A TONG AND GROOVE HOLDS THE LID TO THE BASE

1

ISOLATE THE WATER SUPPLY



2

CUT PIPE AND FLUSH OUT WITH WATER

FIT VALVE HORIZONTALLY (VERTICALLY IN DIRECTION OF ARROW) LEAVING THE PETCOCK IN PLACE TO REGULATE THE FLOW

3

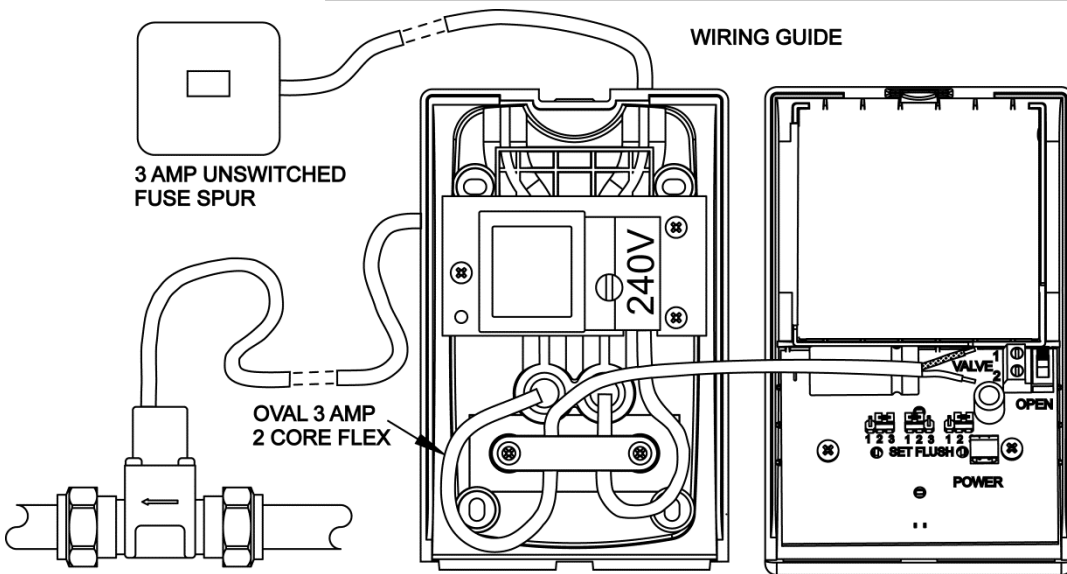
DRILL THROUGH BOTH ACCESS PORTS ON THE BASE. RUN THE MAINS CABLE (FOLLOWING WIRING REGULATIONS) THROUGH THE CABLE ENTRY TO THE THREE TERMINAL CONNECTOR BLOCK AND THE VALVE CABLE TO THE CIRCUIT BOARD TERMINAL BLOCK. THERE ARE FOUR CABLE GUIDES ON THE BASE. LEAVE A SMALL VALVE CABLE LOOP INSIDE THE CONTROLLER SO THE LID CAN BE REMOVED. A TERMINAL BLOCK IS PROVIDED TO EXTEND THE CABLE.

MOUNT THE BASE ON THE WALL OR CEILING CLOSE TO THE URINALS. CONNECT THE BLUE LEAD (LOW VOLTS) TO THE CONNECTOR MARKED "POWER".

WIRING GUIDE

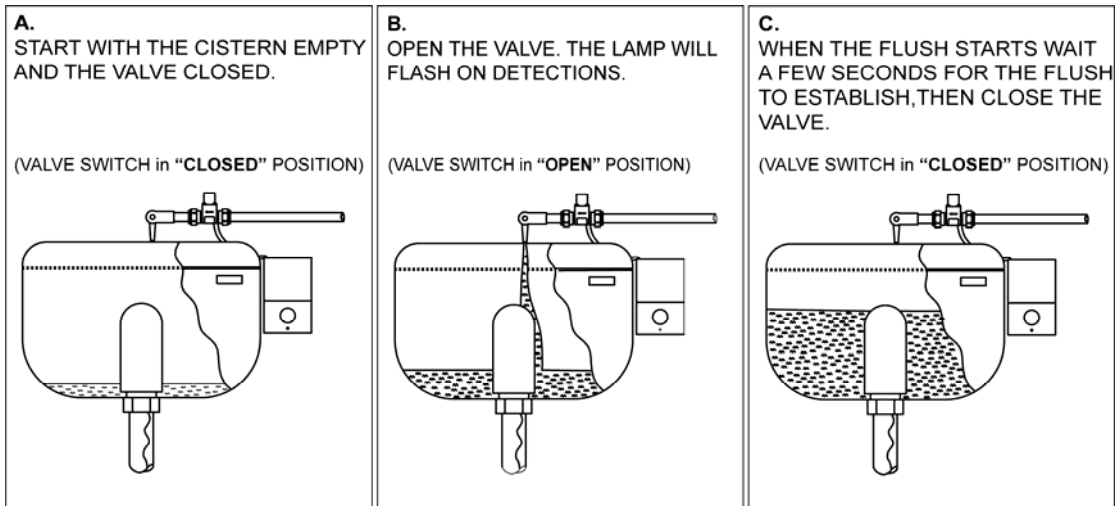
3 AMP UNSWITCHED FUSE SPUR

OVAL 3 AMP 2 CORE FLEX



4

CONNECT THE BATTERY THEN FOLLOW THE THREE STEPS BELOW TO SETUP THE WATER WATCH



THE TIME TAKEN FOR THE CISTERN TO FILL IS STORED IN MEMORY AND USED ON ALL SUBSEQUENT AUTOMATIC FLUSHES.

ONLY FILL TIMES LONGER THAN 1 MIN. ARE SAVED

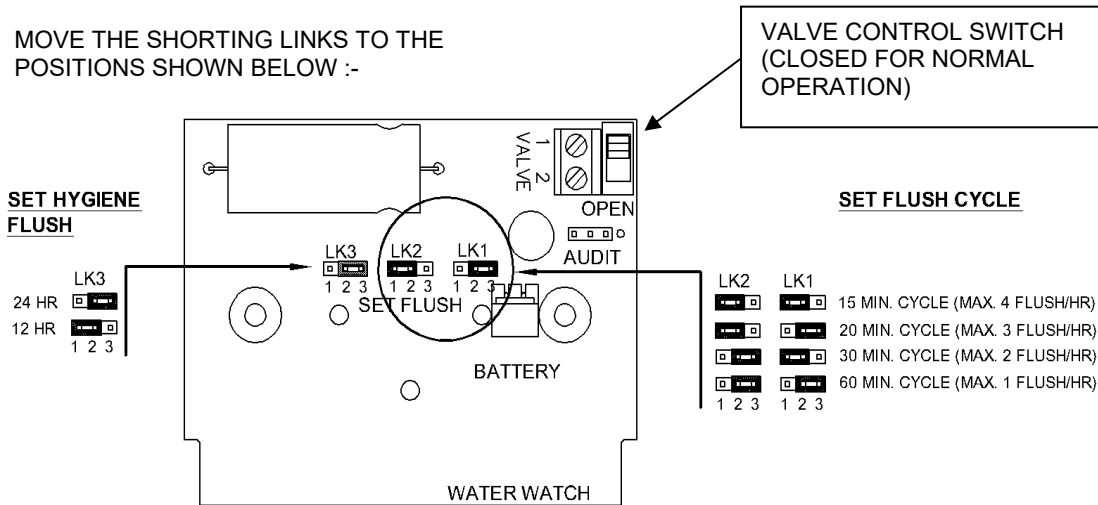
THE WATER WATCH IS NOW FULLY OPERATIONAL. CLOSE THE LID. IF THE LAMP IS FLASHING CHECK THAT THE SWITCH IS IN THE CORRECT "CLOSED" POSITION.

THE SWITCH MUST NEVER BE LEFT IN THE "OPEN" POSITION.

THE LAMP WILL FLASH ON OCCUPANCY DETECTION. TO DISABLE THE LAMP MOVE THE SHORTING LINK MARKED "LAMP" ON THE CIRCUIT BOARD.

CHANGING THE FLUSH SETTINGS

MOVE THE SHORTING LINKS TO THE POSITIONS SHOWN BELOW :-



Designed & Manufactured in the UK by :-
Marnic Technology Ltd
P O Box 279, Cheadle, Cheshire, SK8 7DE
Tel : 0161 485 1024, Fax : 0870 838 1038
E-Mail : sales@marnictechnology.co.uk
www.waterwatch.co.uk



Model No. WW101/M