

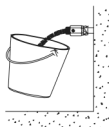
DELABIE

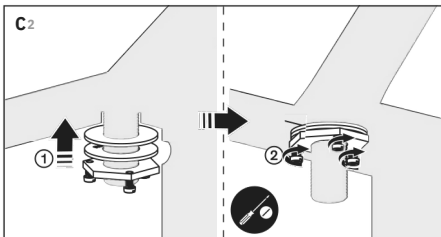
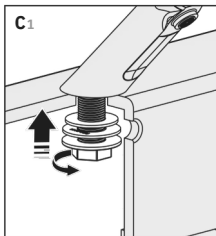
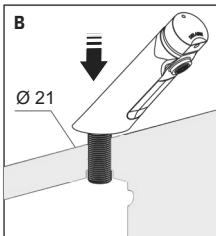
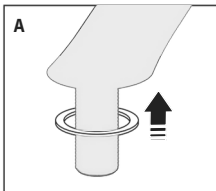
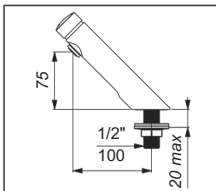
**TEMPOSOFT
TEMPOSOFT 2**

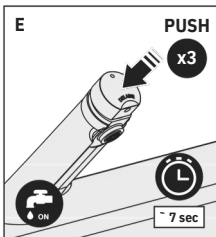
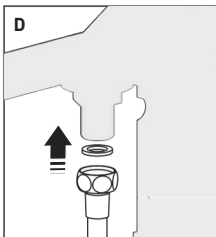
- FR** *Robinetterie temporisée à déclenchement souple*
- EN** *Soft-touch, time flow mixer/tap and valve*
- DE** *Selbstschluss-Armaturen mit besonders leichter Betätigung*
- PL** *Armatura czasowa z delikatnym uruchamianiem*
- NL** *Zelfsluitende kraan met soepele bediening*
- ES** *Grifería temporizada con pulsación suave*
- PT** *Torneiras temporizadas com abertura suave*
- RU** *Порционная арматура с мягким пуском*

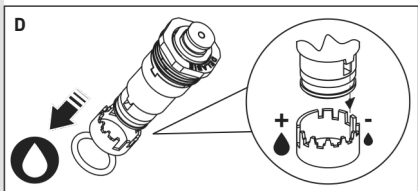
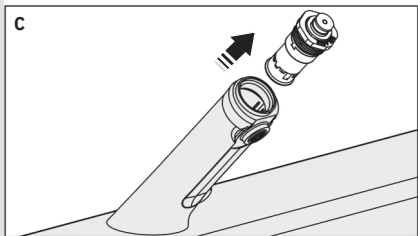
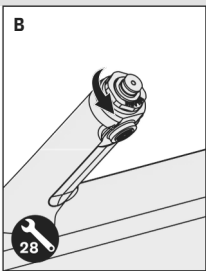
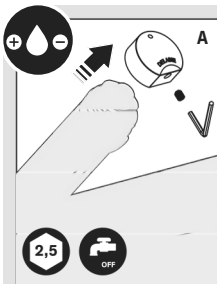


Thoroughly flush the pipes to remove any impurities before installing and commissioning the product.









- Press the push-button control to open the valve.
- Automatic shut-off after ~7 seconds for washbasins (+/- 3 seconds)

INSTALLATION

- **Tap:** supply with cold water (insert the blue or grey marker) or mixed water (insert the red marker).

FOR FURTHER INFORMATION PLEASE CALL DELABIE TECHNICAL
SUPPORT. UK: 01491 821821.
ALL OTHER MARKETS: +33 (0)3 22 60 22 74.

REMEMBER

- **Our valves must be installed by professional installers** in accordance with current regulations and recommendations in your country, and the specifications of the fluid engineer.
- **Sizing the pipes correctly** will avoid problems of flow rate, pressure loss and water hammer (see calculation table in our brochure and online at www.delabie.com).
- **Protect the installation** with filters, water hammer absorbers and pressure reducers to reduce the frequency of maintenance (recommended pressure from 1 to 5 bar maximum).
- **Install stopcocks** close to the valve to facilitate maintenance.
- The pipework, filters, non-return valves, stopcocks, bib taps, cartridge and all sanitary fittings should be checked at least once a year, and more frequently if necessary.

ADJUSTING THE FLOW RATE

- The flow rate is pre-set at the factory at 3 lpm for washbasins, 6 lpm for shower kits (ref.s fitted with ROUND, TONIC JET or GYM shower heads), and 9 lpm for shower valves only (without shower heads) and urinal valves.

MAINTENANCE

Beware: do not grease the inside of the mechanism.

MAINTENANCE & CLEANING

- **Cleaning chrome and stainless steel:** do not use abrasive, chlorine or any other acid-based cleaning products. Clean with mild soapy water using a cloth or a sponge.
- **Frost protection:** drain the pipes and operate the valve several times to drain any remaining water. In the event of prolonged exposure to frost, we recommend taking the mechanisms apart and storing them indoors.

After Sales Care Support:

For the UK market only: Tel. 01491 821 821 - **email:** technical@delabie.com

The installation guide is available on: www.delabie.co.uk

For all other markets: Tel. +33 (0)3 22 60 22 74 - **email:** sav@delabie.fr

The installation guide is available on: www.delabie.com